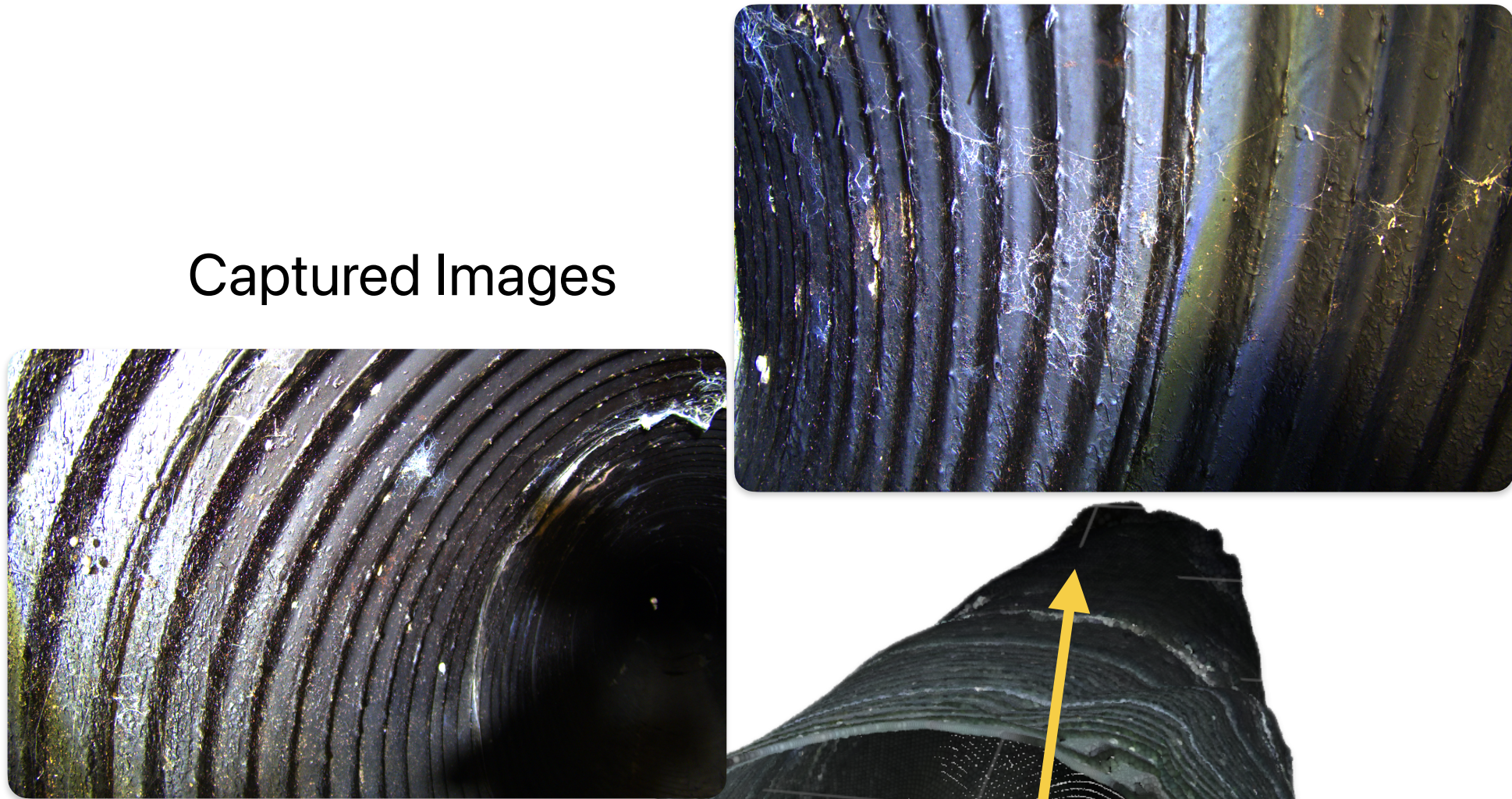
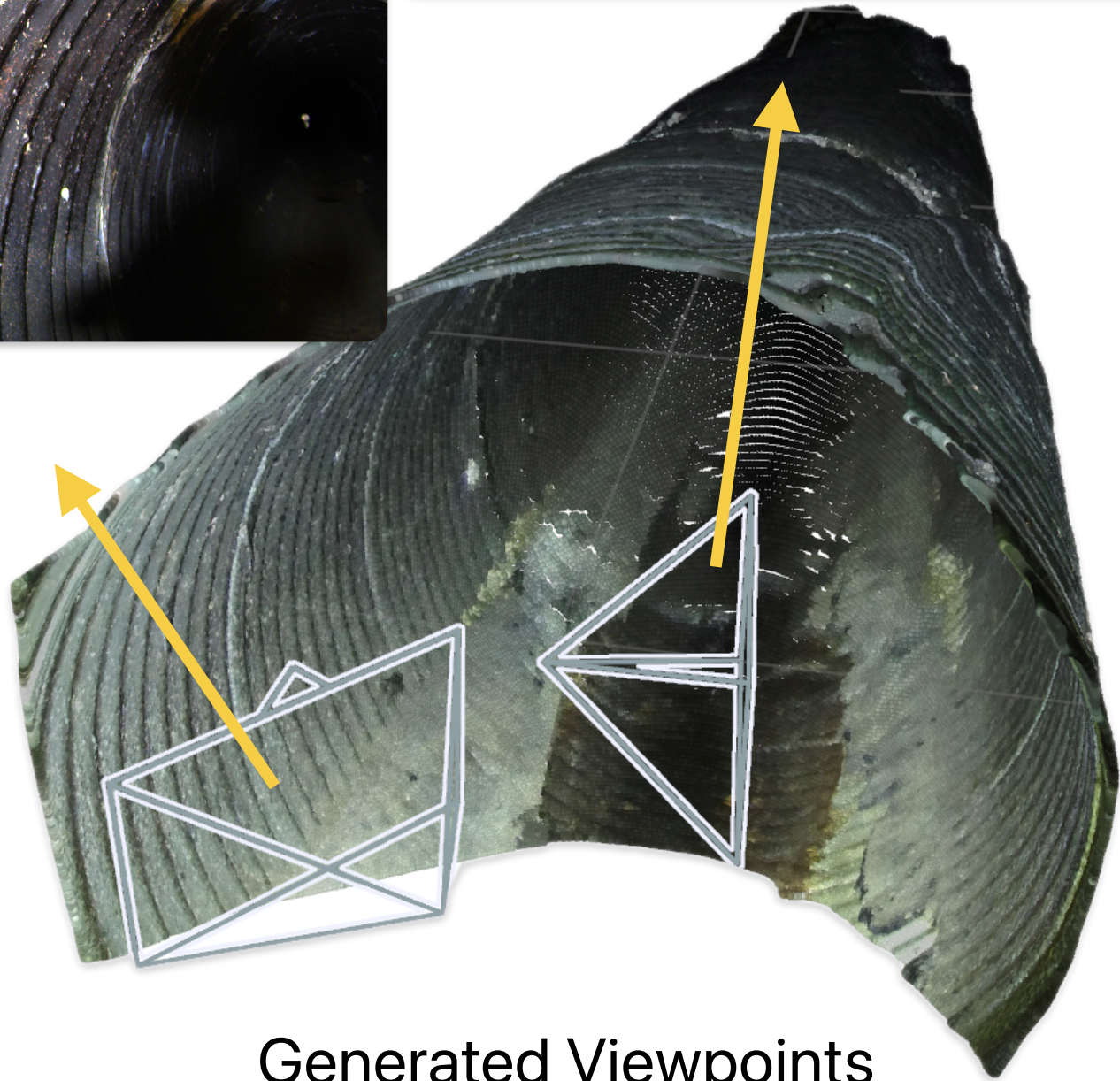


Captured Images



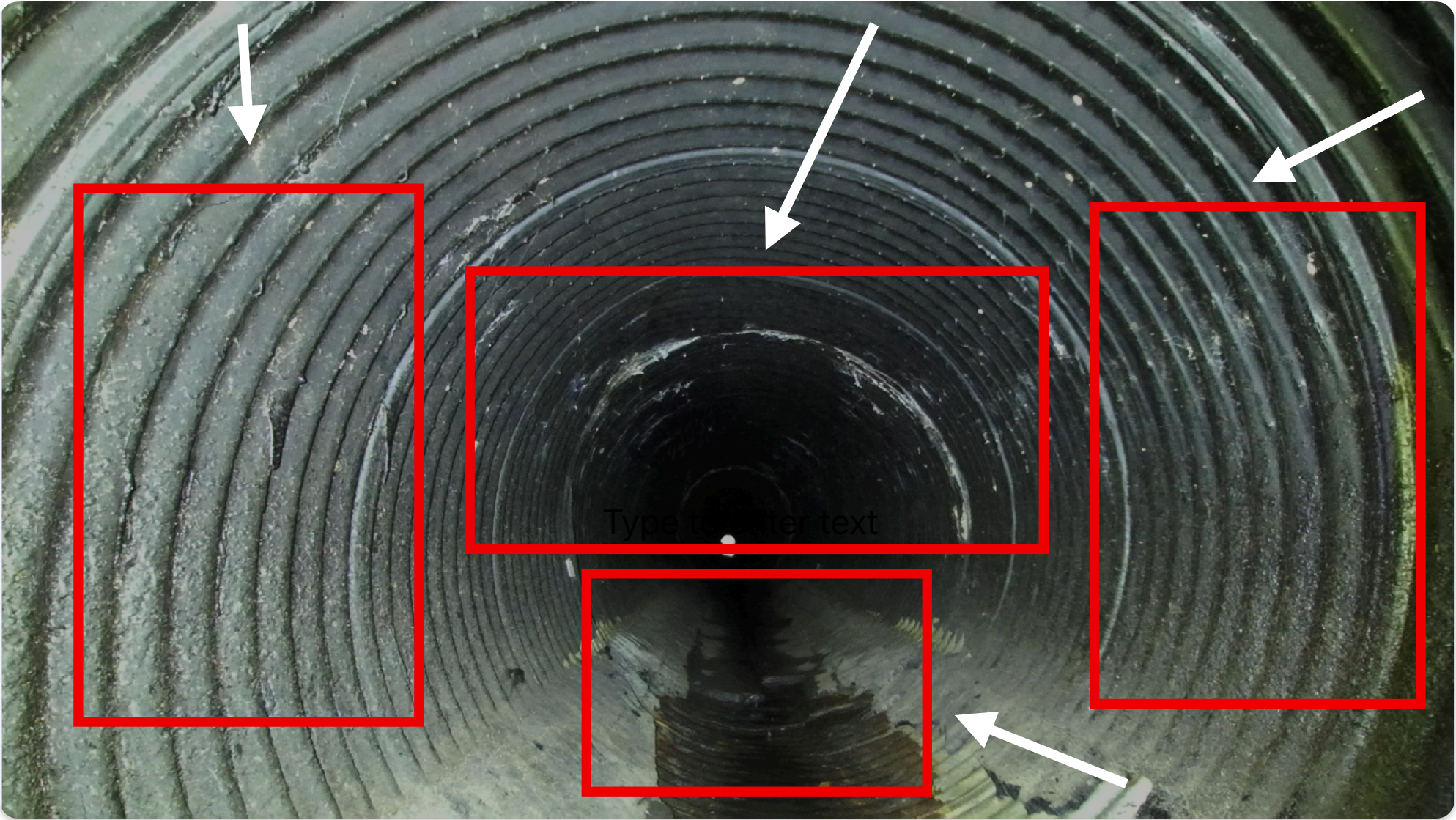
Generated Viewpoints



Concentrated cracks and rough joints along the left wall indicating potential spalling or joint distress requiring closer inspection.(0.35)

Center inner ring surface shows potential micro-cracking or spalling near the culvert throat requiring closer imaging. (0.20)

White mineral deposits and efflorescence along the right-hand wall indicate moisture ingress and possible deterioration at the joints (0.20)



Dark wet staining and pooling at the bottom suggest seepage or leakage through the culvert wall or joints. (0.25)